



Dinosaur Land

Circle: Activity - Who Has the Dinosaur Item?

Objective:

This activity reinforces gross motor, listening, and memory skills as students complete a series of matching and identification tasks.

Materials:

- Visual sequence strip (provided)
 - Dinosaur image cards (provided)
 - Box or bag
 - Scissors
-

Duration: 10 to 15 minutes

Preparation:

1. Print, laminate, and cut out:
 - a. Visual sequence strip
 - b. Two sets of dinosaur image cards (one per student)
2. Set aside one dinosaur image card for demonstration purposes.
3. Place one set of cards in a bag and distribute the other set to students.
4. Seat students in a circle.
5. Have visual sequence strip on hand and refer to it throughout activity to guide students.



Dinosaur Land

Circle: Activity - Who Has the Dinosaur Item?

Activity Script:

We recommend using the following verbal cues as you model each step.

- 1. "Today we're going to play a matching game with the cards I've passed out to you."**
[As you walk students through each step of the activity, point to its corresponding step on the visual sequence strip. Indicate the cards you've distributed to students.]
- 2. "To begin the game, we're going to pull a card out of this bowl. I'll try first."**
[Demonstrate picking a card from the bowl.]
- 3. "Now, I'm going to look at my card and decide what it is."**
[Demonstrate looking at the card and showing it to the class.]
- 4. "What is on the card in my hand?"**
[Prompt students to identify the image. Model if needed.]
- 5. "Our next step is to figure out which one of us has the matching card."**
[Look around the circle to help students determine if they have the matching card.]
- 6. "If you have the card, stand up."**
[Prompt student to stand up.]
- 7. "We're going to take turns picking cards and saying what they are."**
[Choose a student to come up to the bag. Assist student to pull a card and label the image. Use prompting/modeling as needed.]
- 8. "Who has the matching card?"**
[Help students determine if they have the matching card. Repeat activity until all students have had turns. The last seated student is the winner.]

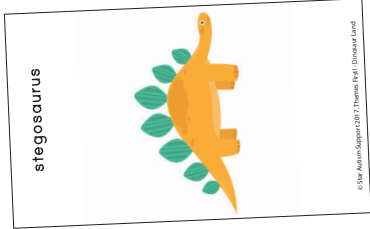

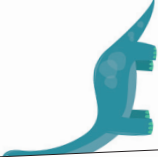

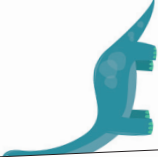
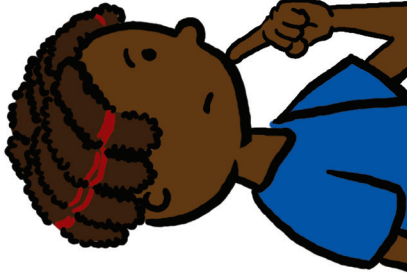
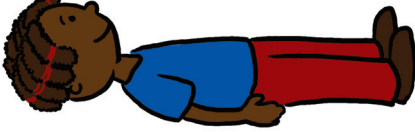

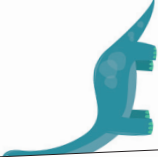


Dinosaur Land

Circle: Activity - Who Has the Dinosaur Item?

Visual sequence strip:



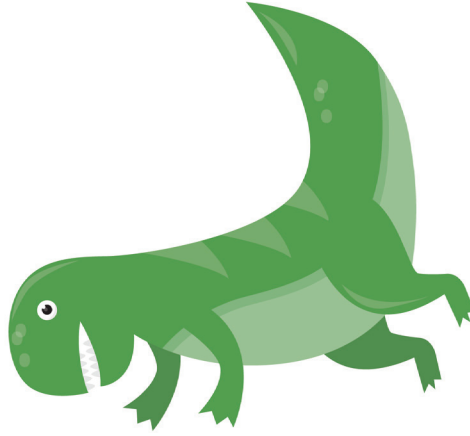
<p>Look at pulled card</p>  <p>© Star Autism Support 2017. Themes First! - Dinosaur Land</p>	<p>Look at your cards</p> <table border="1"><tr><td data-bbox="597 1276 964 1493"><p>stegosaurus</p><p>© Star Autism Support 2017. Themes First! - Dinosaur Land</p></td><td data-bbox="597 1087 964 1276"><p>brontosaurus</p><p>© Star Autism Support 2017. Themes First! - Dinosaur Land</p></td></tr></table>	<p>stegosaurus</p>  <p>© Star Autism Support 2017. Themes First! - Dinosaur Land</p>	<p>brontosaurus</p>  <p>© Star Autism Support 2017. Themes First! - Dinosaur Land</p>	<p>Does it match?</p> 	<p>Stand up if it matches</p> 
<p>stegosaurus</p>  <p>© Star Autism Support 2017. Themes First! - Dinosaur Land</p>	<p>brontosaurus</p>  <p>© Star Autism Support 2017. Themes First! - Dinosaur Land</p>				

Circle Activity: Who Has the Dinosaur Item

© Star Autism Support 2017. Themes First! - Dinosaur Land



t-rex



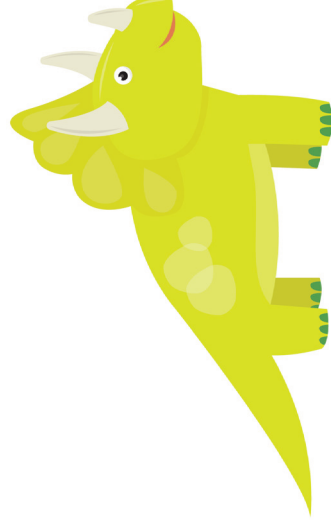
© Star Autism Support 2017. Themes First! - Dinosaur Land

brontosaurus



© Star Autism Support 2017. Themes First! - Dinosaur Land

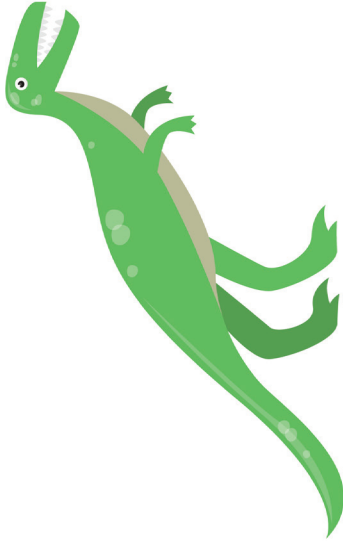
triceratops



© Star Autism Support 2017. Themes First! - Dinosaur Land

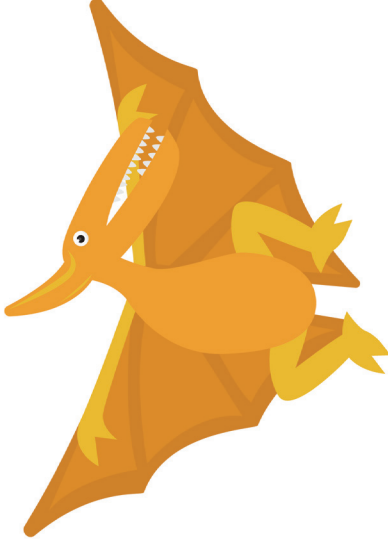


velociraptor



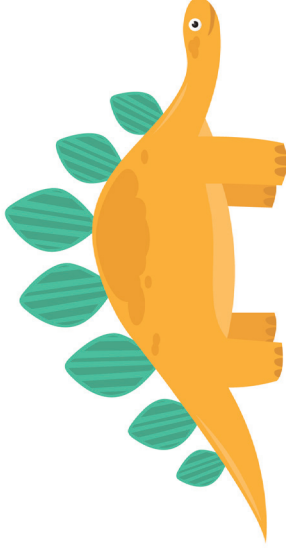
© Star Autism Support 2017. Themes First! - Dinosaur Land

pterodactyl



© Star Autism Support 2017. Themes First! - Dinosaur Land

stegosaurus



© Star Autism Support 2017. Themes First! - Dinosaur Land

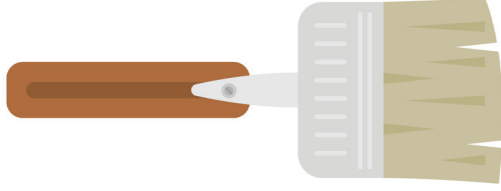


mammoth



© Star Autism Support 2017. Themes First! - Dinosaur Land

brush



© Star Autism Support 2017. Themes First! - Dinosaur Land

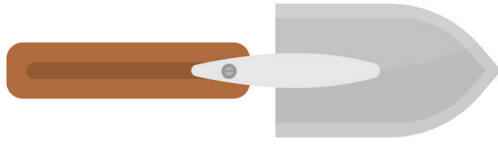
magnifying glass



© Star Autism Support 2017. Themes First! - Dinosaur Land



trowel



© Star Autism Support 2017. Themes First! - Dinosaur Land

fossil



© Star Autism Support 2017. Themes First! - Dinosaur Land