




Fall Festivals

Movement: Activity – Pin the Pumpkin to the Pumpkin Patch

Activity Goal:

Students use gross motor skills to participate in a physical task based on the classic “Pin the Tail on the Donkey” party game.

Embedded Skill Targets:

Curricular Area	Learning Spectrum		
	Increased support needs		Extended learning
Receptive and Expressive Language	Following one-step directions Attending Gross motor imitation	Following two-step directions Commenting with one or two words	Commenting using phrases Narration

Materials:

Provided:

- Sequence strip or large sequence panels
- Scene picture pages
- Pinning pictures

Needed:

- Black permanent marker
- Masking tape
- Blindfold
- Scissors
- Tape (optional)

Preparation:

1. Print, laminate, and cut out:
 - a. Sequence strip or large sequence panels
 - b. Pinning pictures (1 per student)
2. If using the large sequence panels, arrange the images in order and tape them together.
3. Prepare the scene picture:
 - a. Print the scene picture pages (1 set for the entire class).
 - b. Laminate and cut along the dashed lines.
 - c. Carefully align the pages (rotating them as needed) before taping the quadrants together to form one large scene picture.
4. Tape the scene picture to a wall or whiteboard at students' sight level.
5. Using a permanent marker, write a student's name or initials on each pinning picture.
6. Roll pieces of masking tape to be placed on the back of each student's picture.

Helpful Learning Tools

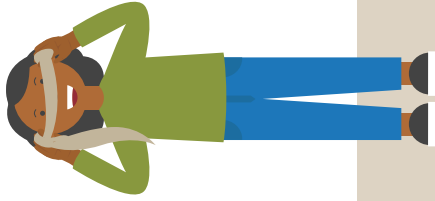
- Use the corresponding digital REEL as an alternative or complement to the printable materials.
- Review the Learning Differentiation Guide to individualize this lesson for each student's learning level.

Instructions:

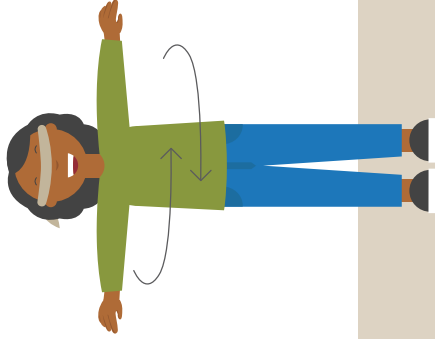
1. Instruct students to sit where they can see the scene picture, and hand each student their pinning picture.
2. Review the activity sequence strip.
3. Play the game:
 - a. Give the first student a tape circle to put on the back of their picture.
 - b. Place a blindfold on the student.
Note: The student may close their eyes instead or skip this step altogether.
 - c. Spin the student in place, and guide them toward the scene picture.
 - d. Assist the student as necessary to place their pinning picture on the scene.
4. Repeat Step 3 until each student has had a turn.



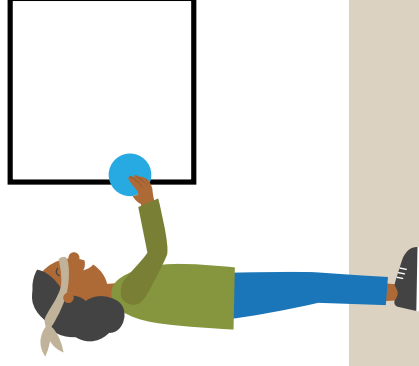
Put on the blindfold



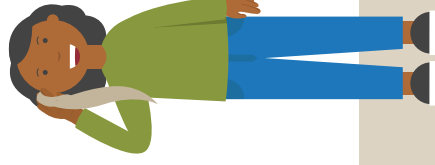
Spin around



**Walk toward the scene,
and pin your picture**



**Take off your blindfold,
and sit down**



Fall Festivals – Movement: Activity – Pin the Pumpkin to the Pumpkin Patch

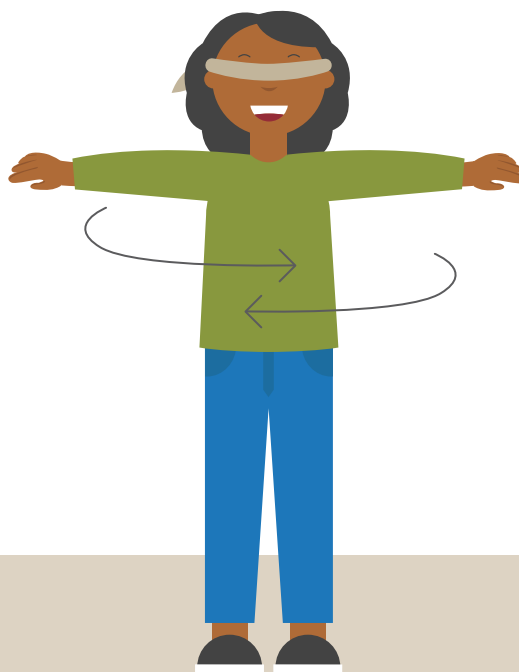
© STAR Autism Support 2025. Themes First!



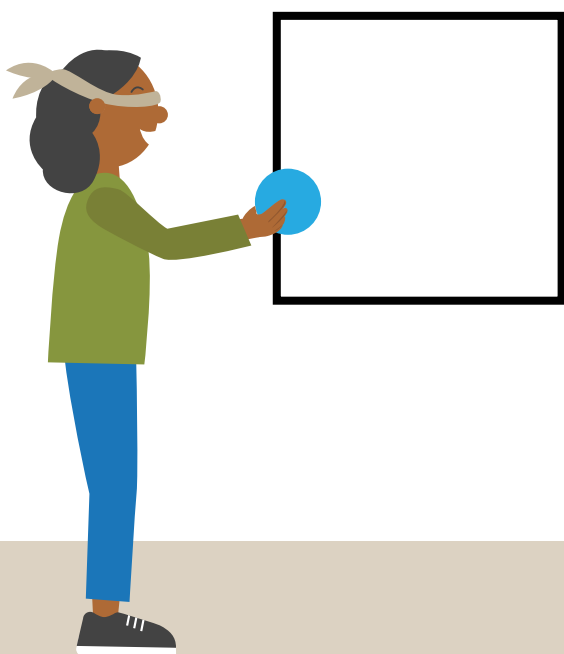
Put on the blindfold



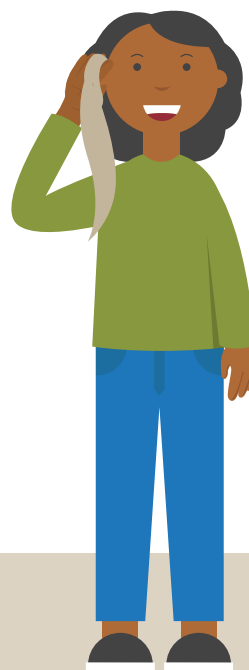
Spin around



**Walk toward the scene,
and pin your picture**



**Take off your blindfold,
and sit down**







Fall Festivals – Movement: Activity – Pin the Pumpkin to the Pumpkin Patch



