



Weather Watch

Group Activity: Life Skills - Lesson 3 - Weather Preparedness – What Is Extreme Weather?

Objective:

This activity builds on listening, motor, and social skills to support students in reaching individual learner outcomes through the study of weather.

Materials:

- Weather chart (provided)
 - Weather image cards (provided)
 - Tape or glue
 - Velcro
 - Bag/basket
-

Duration: 15-20 minutes

Preparation:

1. Print:
 - a. Weather chart pages (1 for entire class)
 - b. Weather image cards (1 set for entire class)
2. Assemble the weather chart by taping or gluing the two sheets together so lines align.
3. Laminate:
 - a. Assembled weather cart
 - b. Weather image cards
4. Attach velcro to:
 - a. The blank boxes on the weather chart
 - b. The back of each weather image card
5. Place weather image cards in a bag/basket.
6. Display blank weather chart in front of class.



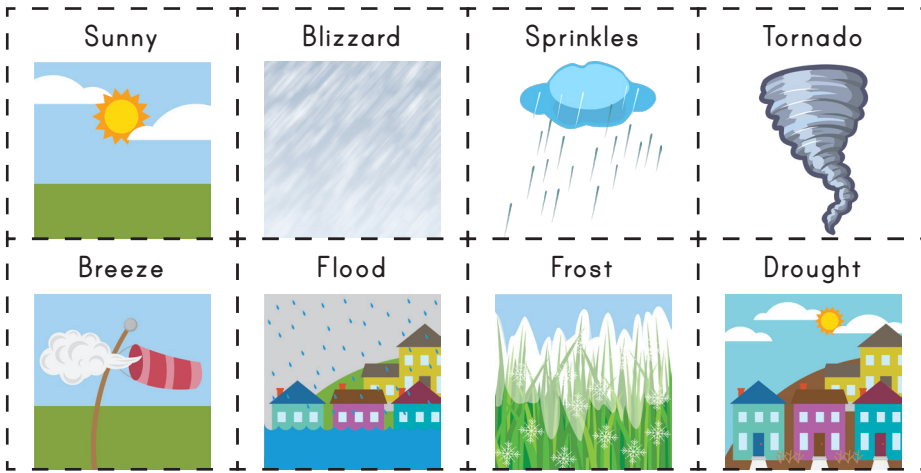
Weather Watch

Group Activity: Life Skills - Lesson 3 - Weather Preparedness – What Is Extreme Weather?

Instructions:

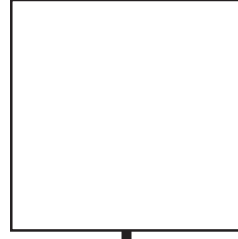
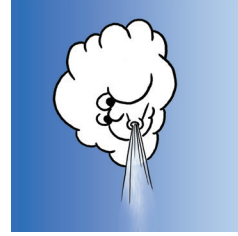
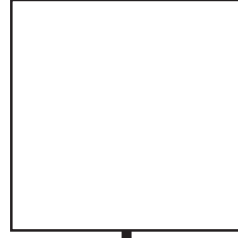
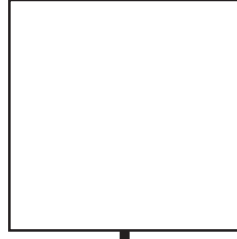
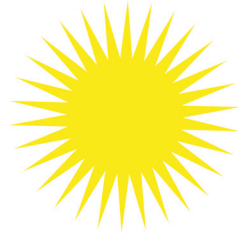
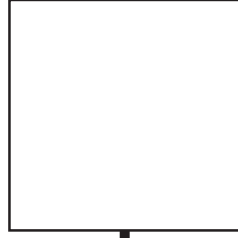
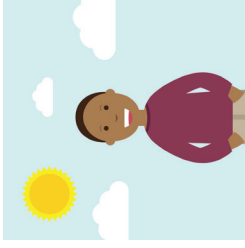
1. Lead discussion with students about extreme weather:
 - a. What is extreme weather?
 - i. Extreme weather is simply really bad weather on a large scale.
 - ii. It doesn't happen very often, and only in specific parts of the world.
 - iii. Offer examples (hurricanes, blizzard, etc.).
2. Show students the weather chart and explain that together you're going to chart different types of weather to understand the difference between "normal" and "extreme" weather.
 - a. Extreme weather isn't just a storm. It is a type of weather taken to the extreme. Explain that another way to define "extreme" is "too much." What happens when there's too much sun? Drought. Too much rain? Flood. Too much wind? Hurricane. Too much snow? Blizzard. This chart will show students how to understand weather events in terms of scale.
3. Pull a card out of the bag/basket as an example and ask students where they think it belongs: closer to the normal end, or closer to the extreme end. Decide as a class, and then return the card to the bag to begin activity.
4. Choose a student to pull out another card, and as a class, decide if it goes on the left side (normal) or the right side (extreme).
5. Complete the chart by having students take turns pulling cards, and collectively deciding where each card goes on the chart.

Weather Image Cards:



Weather Chart (1 of 2)

Normal Weather



Weather Chart (2 of 2)

Extreme Weather

