


TURNING CLASSROOM ASSIGNMENTS IN ON TIME

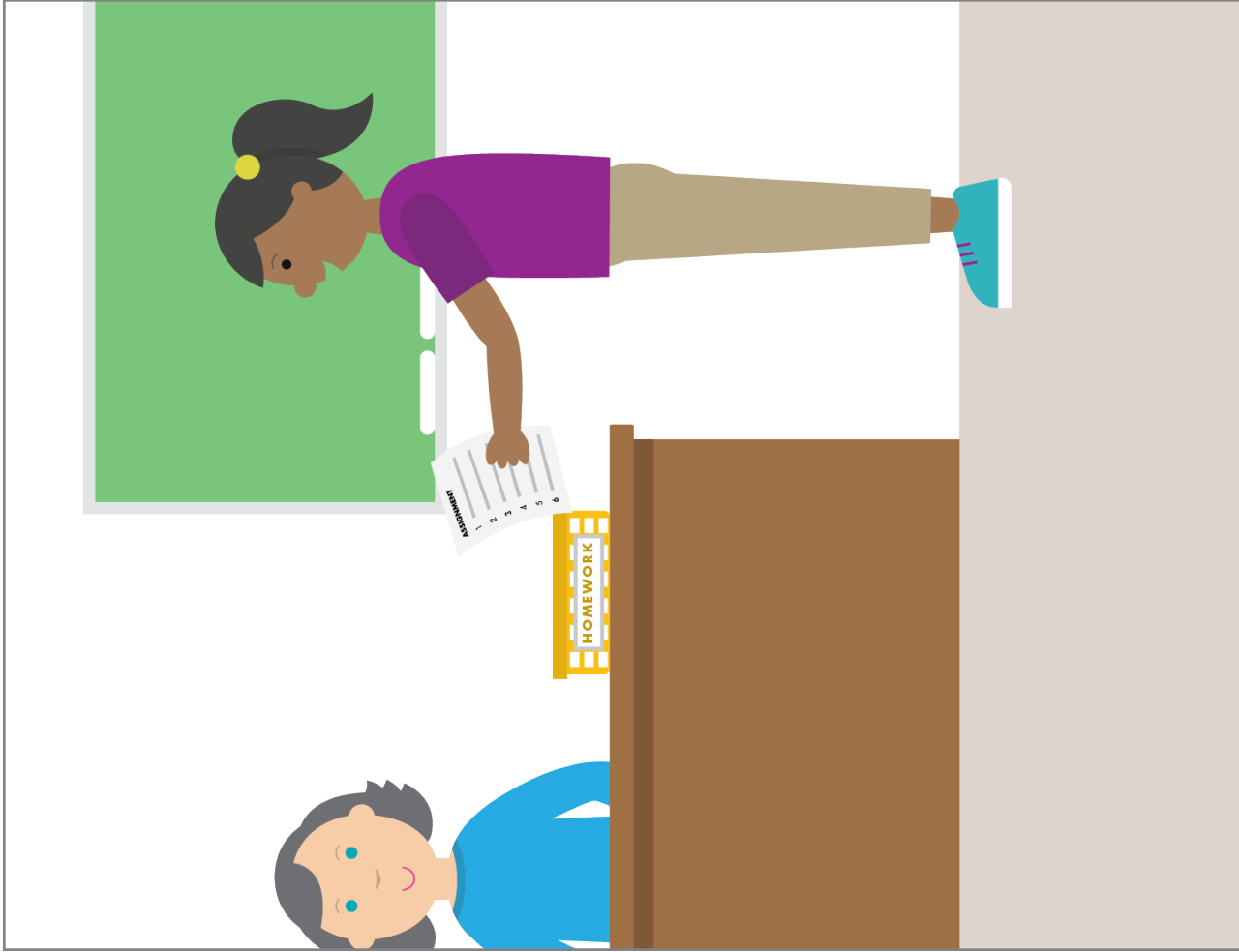
©STAR Autism Support 2021.



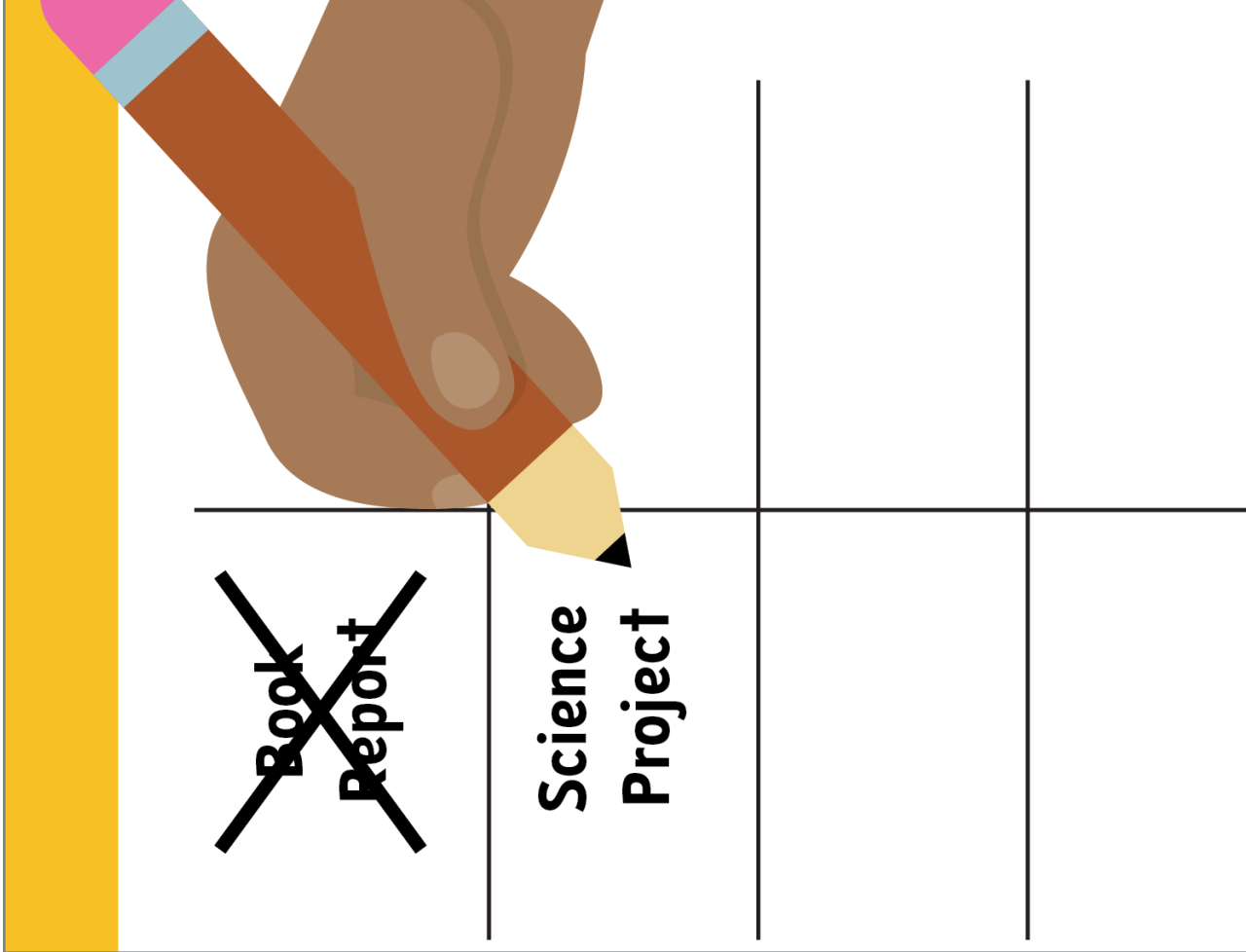
Book Report	Due: Monday

Review homework assignments

©STAR Autism Support 2021.



Turn in the assignments



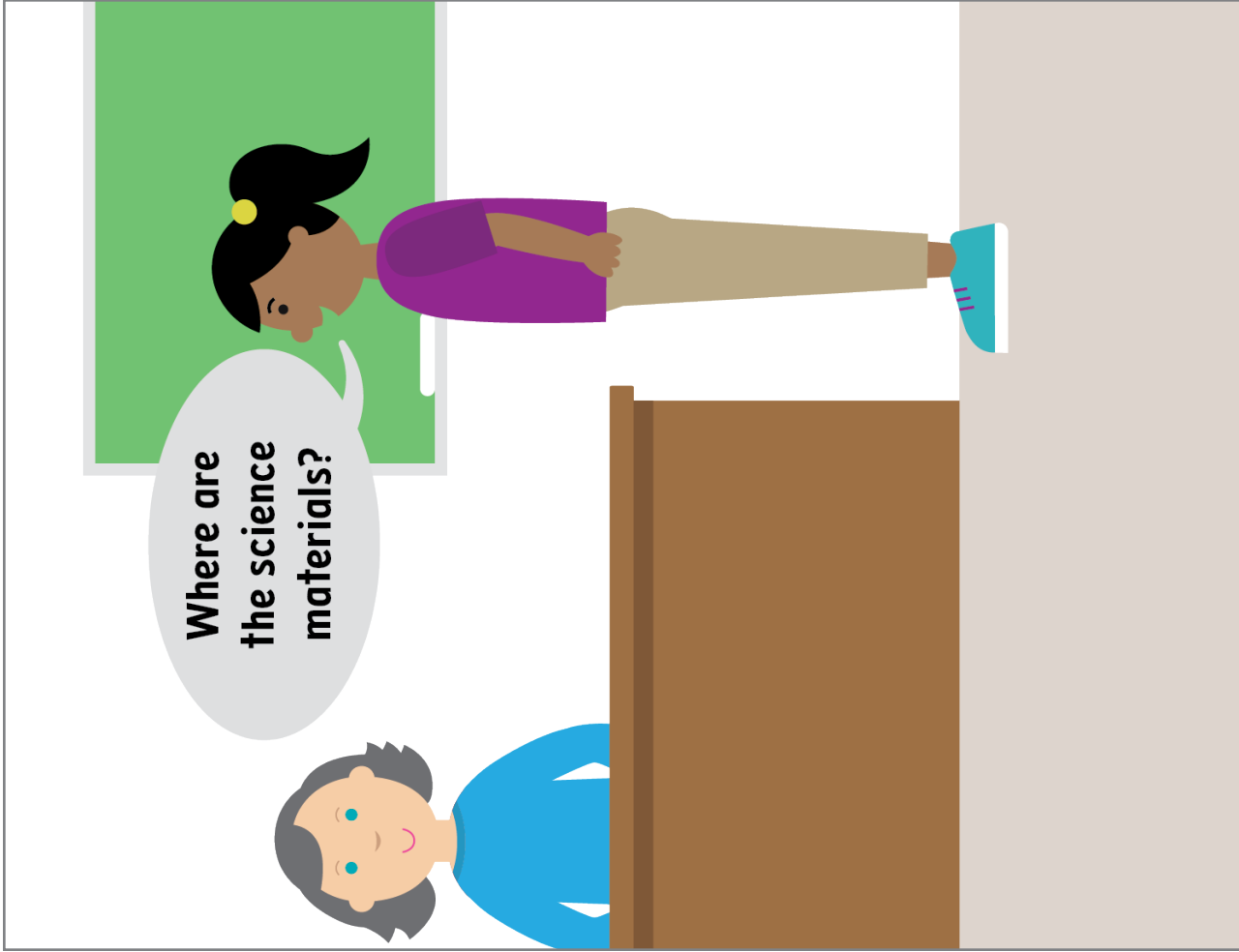
Update your planner or homework notebook

Illustration of a hand writing 'Friday' on a calendar grid. The grid has four columns and two rows. The first row contains 'Book Report' (crossed out), 'Due: Monday' (crossed out), and 'Due: Friday' (highlighted in yellow). The second row contains 'Science Project' and two empty cells. The grid is on a yellow background with a spiral binding on the left.

Enter the date the assignment is due

Illustration of a green board with two sections: 'Reading Directions' and 'Science Directions'. Each section has a vertical line followed by five horizontal lines, numbered 1 through 5. The board is on a white background with a spiral binding on the right.

Review the homework directions



**If needed, ask
for clarification**



