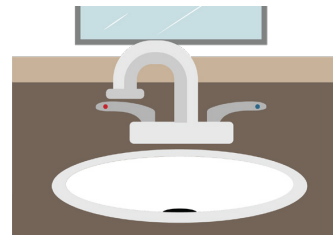


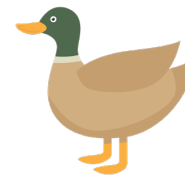
**Instructions:**

Read the description and circle the corresponding word.

**I wash my  
hands in  
this.**

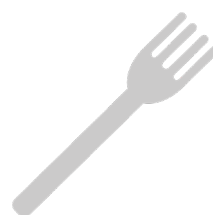
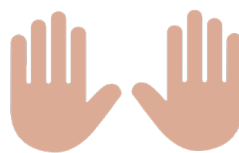


**This is shaped  
like a rectangle  
and makes  
bubbles.**





**I wash these when  
they are dirty.**

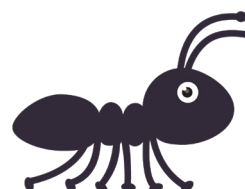
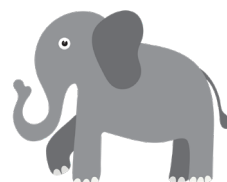
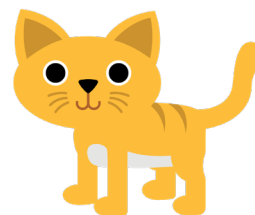


**This helps me  
dry my hands.**

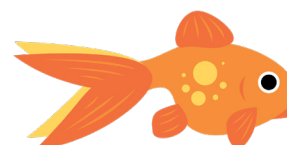




**This is where the  
water in the sink  
comes from.**



**This is where  
I put my dirty  
paper towel.**

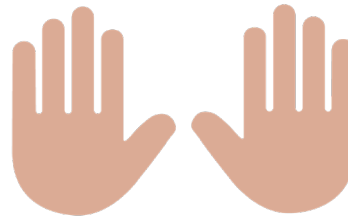
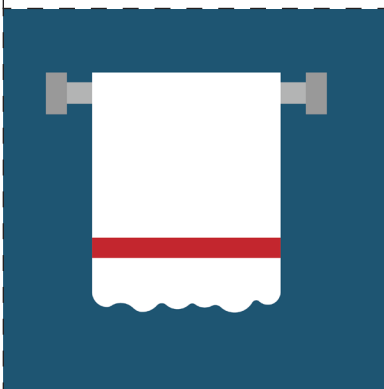
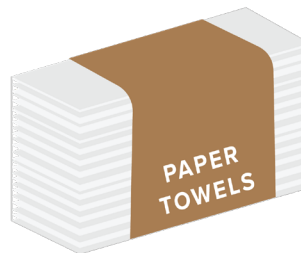


**Preparation:**

Cut out words and pictures. Glue or tape pictures to the left side of a piece of paper

**Instructions:**

Students match the words to their corresponding images.

**Match the Words to the Pictures****Sink****Bar Soap****Hands****Towel****Faucet****Paper Towels**



**Garbage Can**



**Sanitizer**



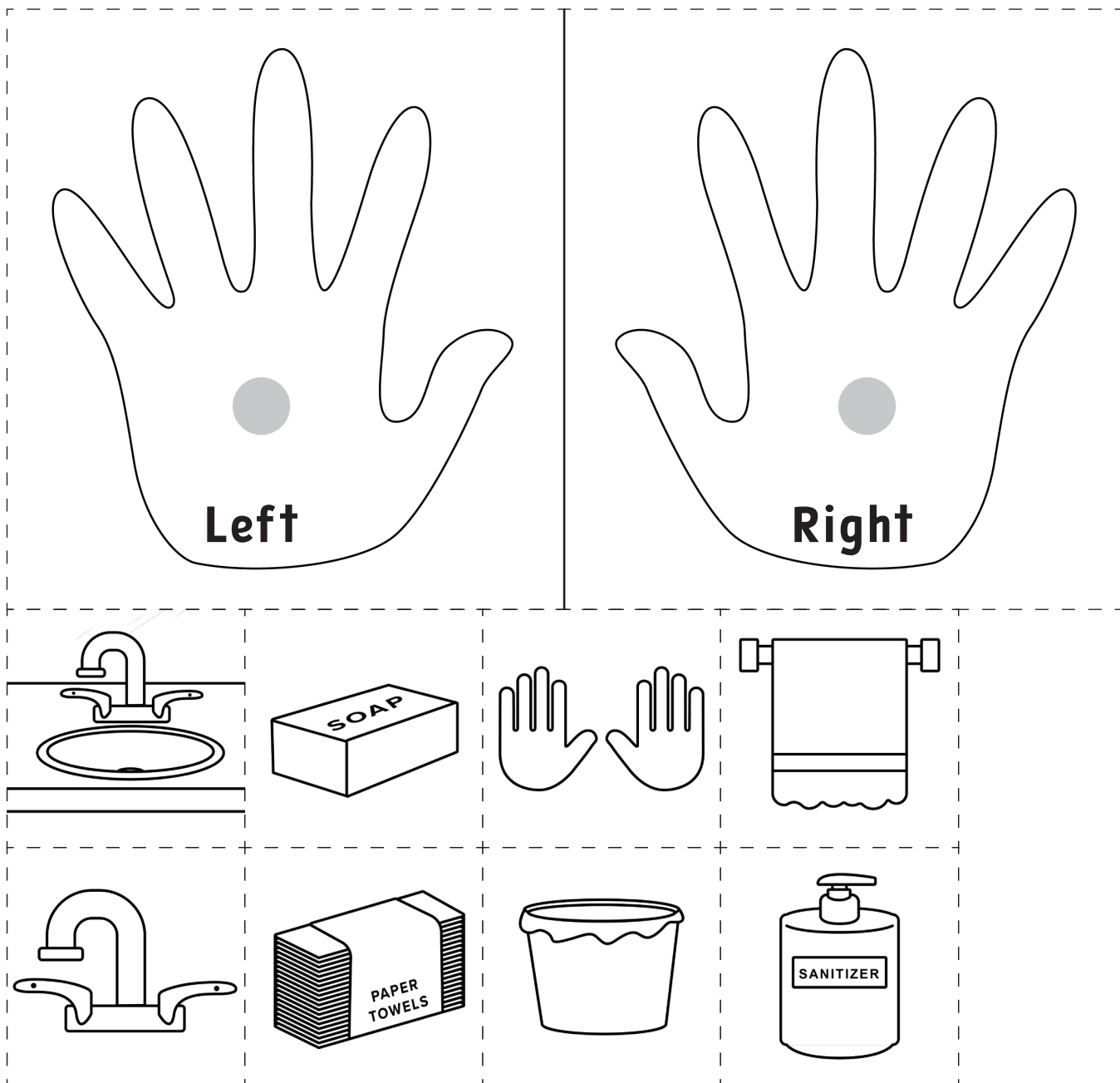
**Liquid Soap**

**Preparations:**

Print and cut the right and left hand images, hand washing images. Print student instruction worksheet. Place left hand on the left side of a piece of paper and right hand on the right side

**Instructions:**

Students follow the worksheet instructions to place different images below the appropriate hands.

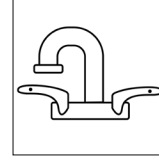


## Follow the Instructions

Put the

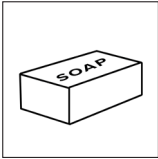


on the **left** hand and the

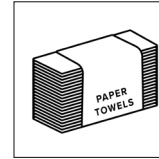


on the **right** hand

Put the

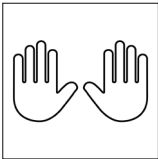


on the **right** hand and the

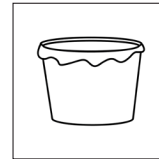


on the **left** hand

Put the

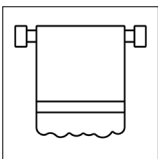


on the **left** hand and the



on the **right** hand

Put the




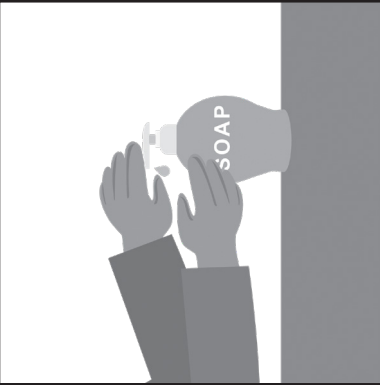



on the **right** hand and the



on the **left** hand

Name: \_\_\_\_\_

**Instructions:** Cut and paste the missing steps to wash hands.

1	2	3	4	5
				

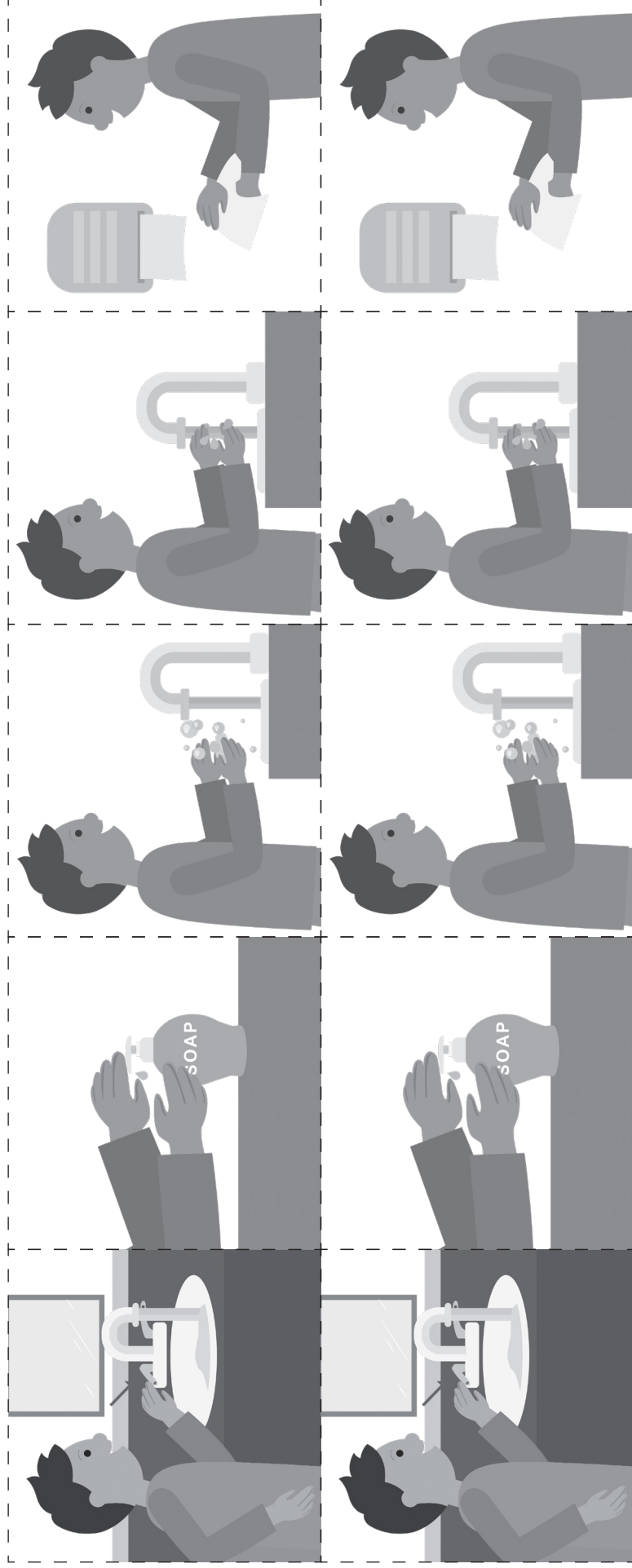


Name: \_\_\_\_\_

**Instructions:** Cut and paste the steps to wash hands.

1	2	3	4	5

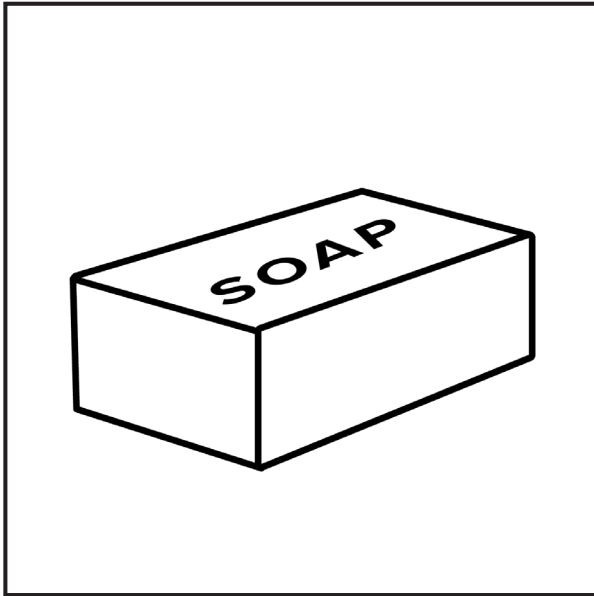
**Routine Step Images:**



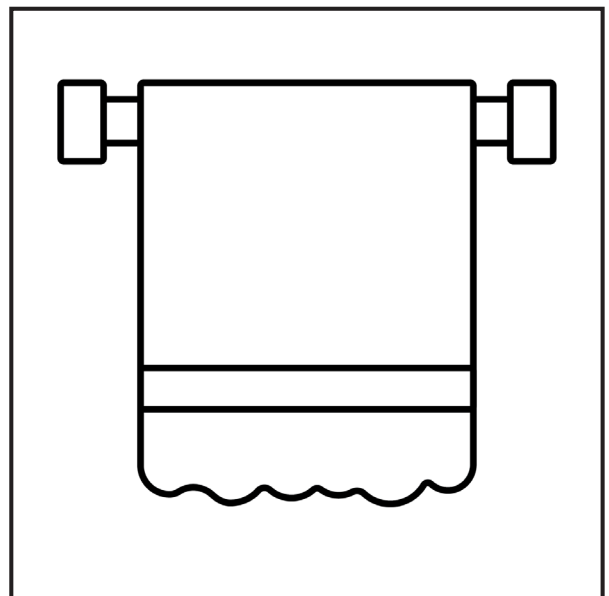
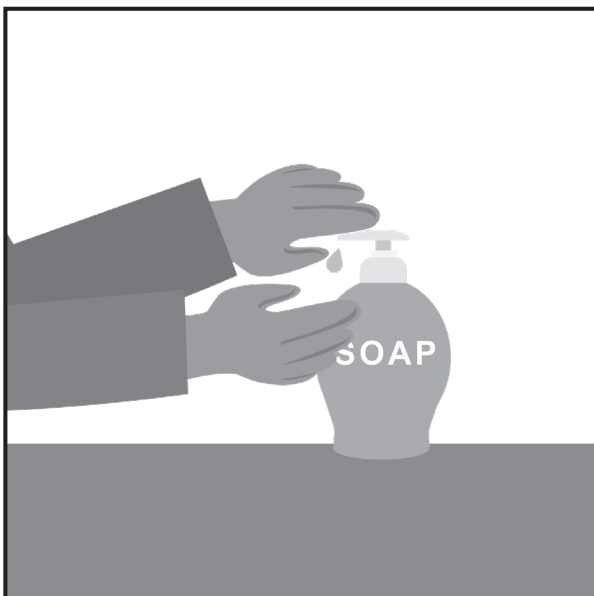
Name: \_\_\_\_\_

**Instructions:** Circle the picture that matches the sentence.

**Turn on water**



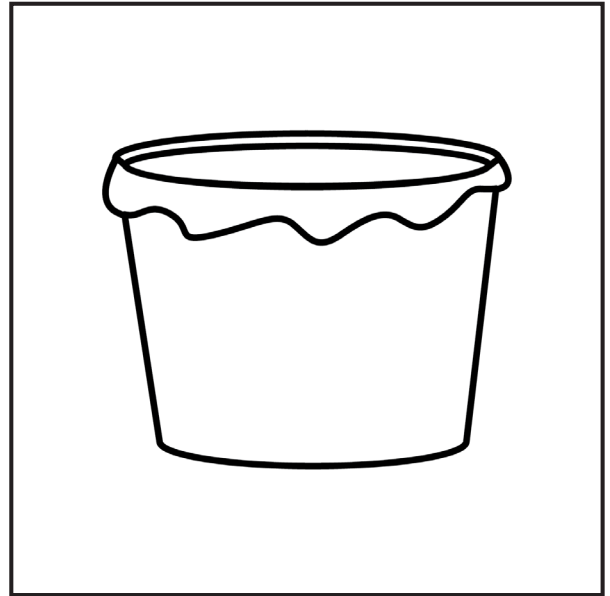
**Put soap on hands**



Name: \_\_\_\_\_

**Instructions:** Circle the picture that matches the sentence.

### Scrub hands



### Dry hands

