

# What Is a Solar Eclipse? Social Script

## Objective:

Social scripts help students understand expected behaviors, routines, upcoming events, and a variety of social skills including perspective taking and social-emotional concepts.

---

## Materials:

- “What is a Solar Eclipse?” social script (provided)
  - Scissors
  - Hole punch
  - Ring for binding purposes (1 per prepared script)
- 

## Preparation:

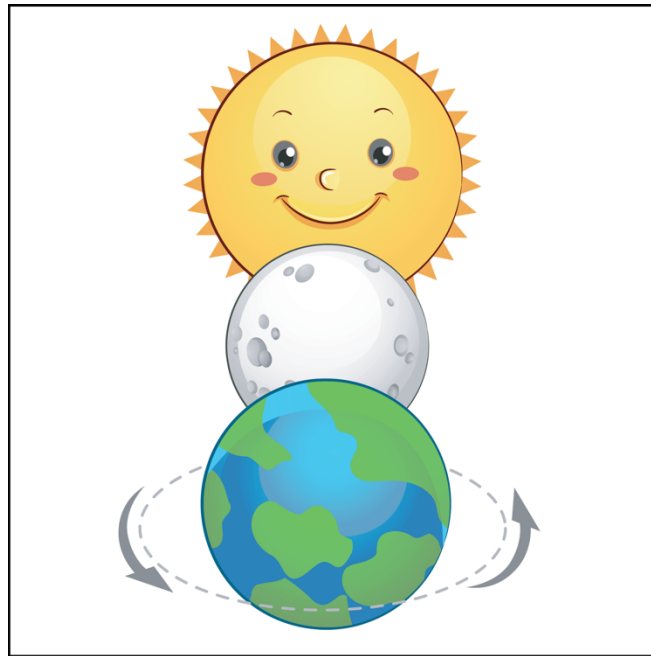
1. Print the social script pages (1 set per student or 1 set for the entire class).
  2. Cut along the dashed lines.
  3. Assemble the pages.
  4. Hole-punch the top left corner.
  5. To bind the book, place a ring through the punched hole.
- 

## Instructions:

1. Schedule a time to read the social script to students.
  2. As needed, increase the frequency with which you read the social script to assist students’ skill acquisition.
  3. Social scripts are most effective when combined with opportunities to practice and receive feedback. Give adequate opportunities to practice skills and provide reinforcement to increase positive behaviors.
- 

## Considerations:

- Social scripts are not intended for use following off-task behavior. They are to be used as a teaching tool prior to the event or targeted behavior. If needed, schedule additional times throughout the day to review the script with students.
- To promote maintenance of the desired skills, begin to increase the amount of time between each reading.
- To promote generalization of the desired skills, ask other adults and peers to review the script with students and practice the specific skills.
- For learners who would benefit from participating in the development of a social script, allow them to find their own images and/or use some of their own words.
- For learners who are readers and learn independently from social scripts, allow them to read the script on their own.



# What Is a Solar Eclipse?

What Is a Solar Eclipse? – Social Script

© STAR Autism Support 2024.

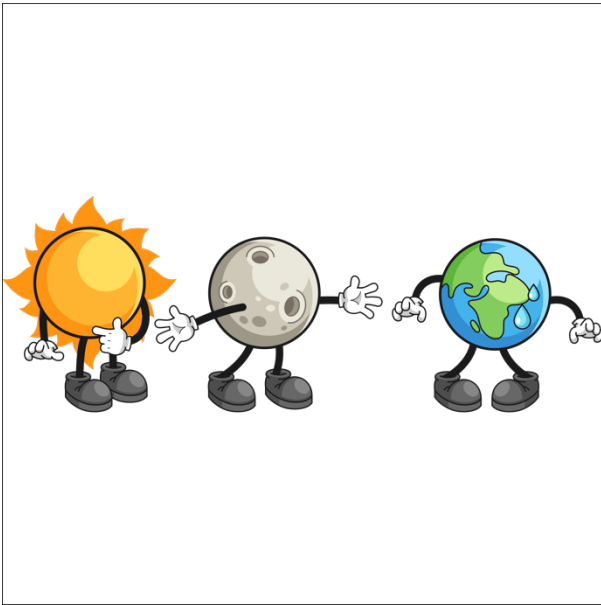


On Monday, April 8, we are going to see a solar eclipse!



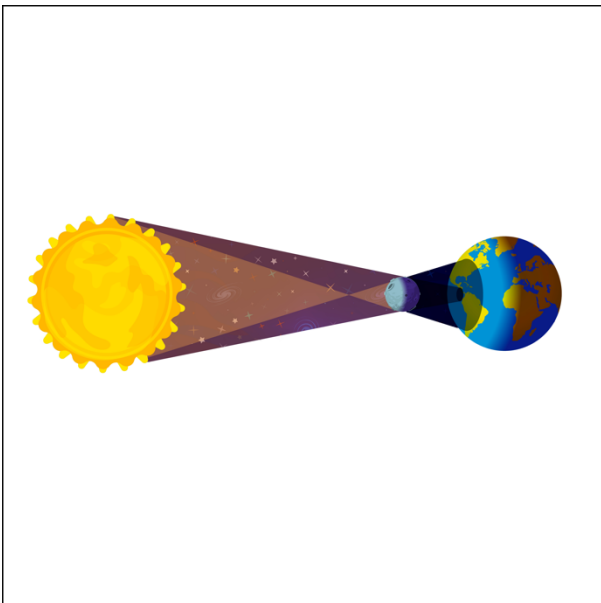
What Is a Solar Eclipse? – Social Script

© STAR Autism Support 2024.



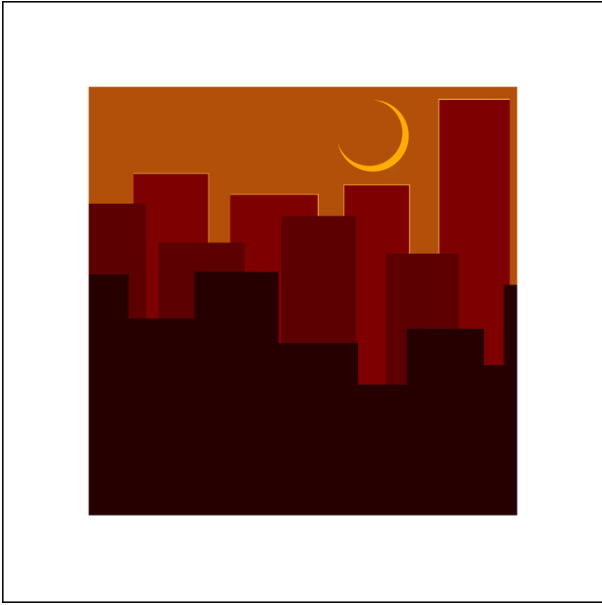
A solar eclipse happens when the sun, moon, and Earth all line up.

2



Sometimes in an eclipse, the moon blocks the light from the sun for a few minutes, making a big shadow on Earth.

3



On April 8, the big shadow from the eclipse will make it dark in some towns for about 5 minutes.

4



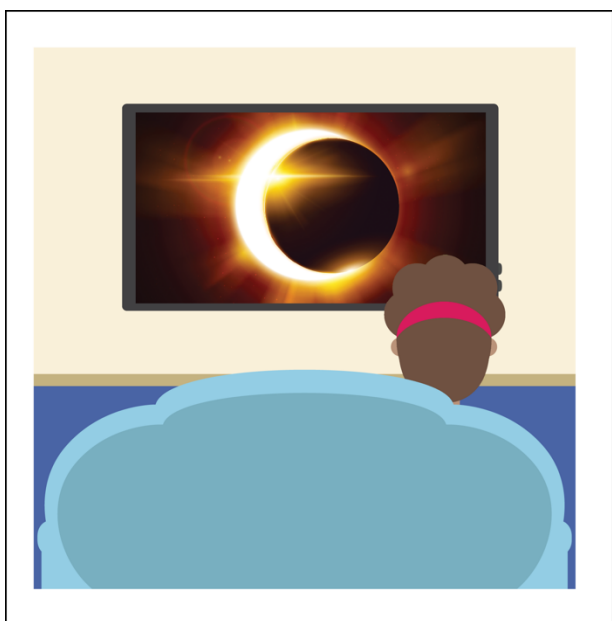
Even birds and other animals notice that it's getting darker.

5



When we look up at the eclipse,  
we need to wear special glasses  
to keep our eyes safe.

6



Or we can watch the eclipse  
on TV!

7